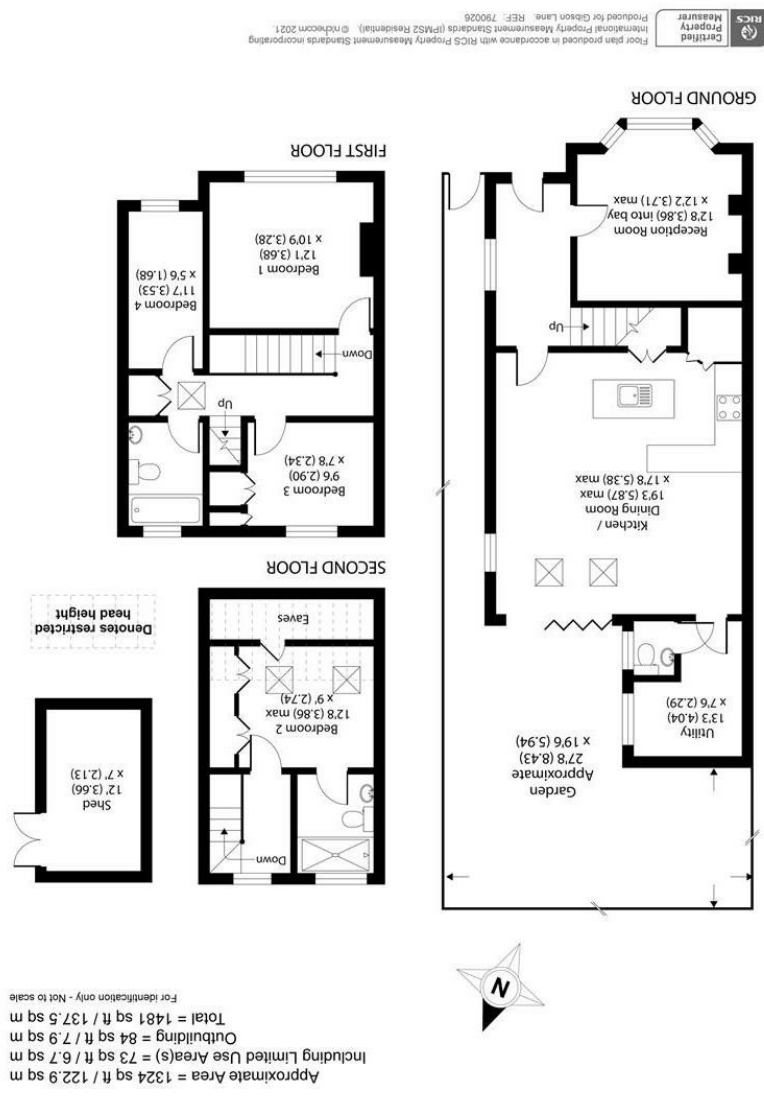


Important Information
 All appliances listed in these details are only 'as seen' and have not been tested by Gibson Lane, nor have we sought certification of warranty or service, unless otherwise stated. Measurements, areas and distances are approximate. Floor plans and photographs are for guidance purposes only and must not be relied upon for any purpose. These details are offered on the understanding that all negotiations are made through this company. Neither these particulars, nor verbal representations, form part of any offer or contract, and their accuracy cannot be guaranteed.

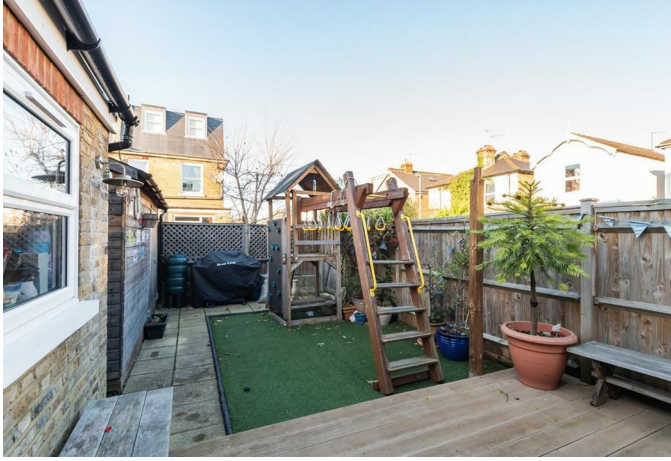
Energy Efficiency Rating	Environmental Impact (CO ₂) Rating
A	A
B	B
C	C
D	D
E	E
F	F
G	G
H	H
I	I
J	J
K	K
L	L
M	M
N	N
O	O
P	P
Q	Q
R	R
S	S
T	T
U	U
V	V
W	W
X	X
Y	Y
Z	Z



34 Richmond Road
 Kingston upon Thames
 Surrey
 KT2 5ED
 www.gibsonlane.co.uk
 Tel: 020 8546 5444



Windsor Road
 Kingston Upon Thames KT2 5EY



Windsor Road

Kingston Upon Thames KT2 5EY

Guide Price £975,000

A stunning Victorian semi detached family home offering accommodation approaching 1500 square foot arranged over three floors.

Description

An attractive brick fronted Victorian semi detached family home with generous accommodation approaching 1500 square foot arranged over three floors. The property has recently been extended and modernized to an extremely high specification. The amazing ground floor footprint comprises of a bright and airy living room with feature fireplace to the front, large downstairs WC/utility/office, and the wow factor being a stunning open plan 18 x 19' kitchen/dining/family room to the rear, with bi-folding doors leading to a delightful low maintenance rear garden. To the upper floors there is an impressive master bedroom suite with fitted wardrobes and en-suite bathroom, two further double bedrooms, study/nursery, cleverly designed built in storage throughout the property plus eaves storage and a modern family bathroom with underfloor heating. Properties of this style in these sought after secondary river roads are always in high demand and therefore we would thoroughly recommend a viewing to appreciate what this delightful home has to offer.

Situation

Windsor Road is a sought after North Kingston secondary river road. The property is conveniently positioned for Kingston station giving direct access into Waterloo and the A3 which serves both London & the M25. Kingston town centre with its array of shops, restaurants and bars is a short distance away. The standard of schooling in the immediate area is excellent within both the private and state sectors.

Tenure: Freehold

Local Authority: Kingston Upon Thames

